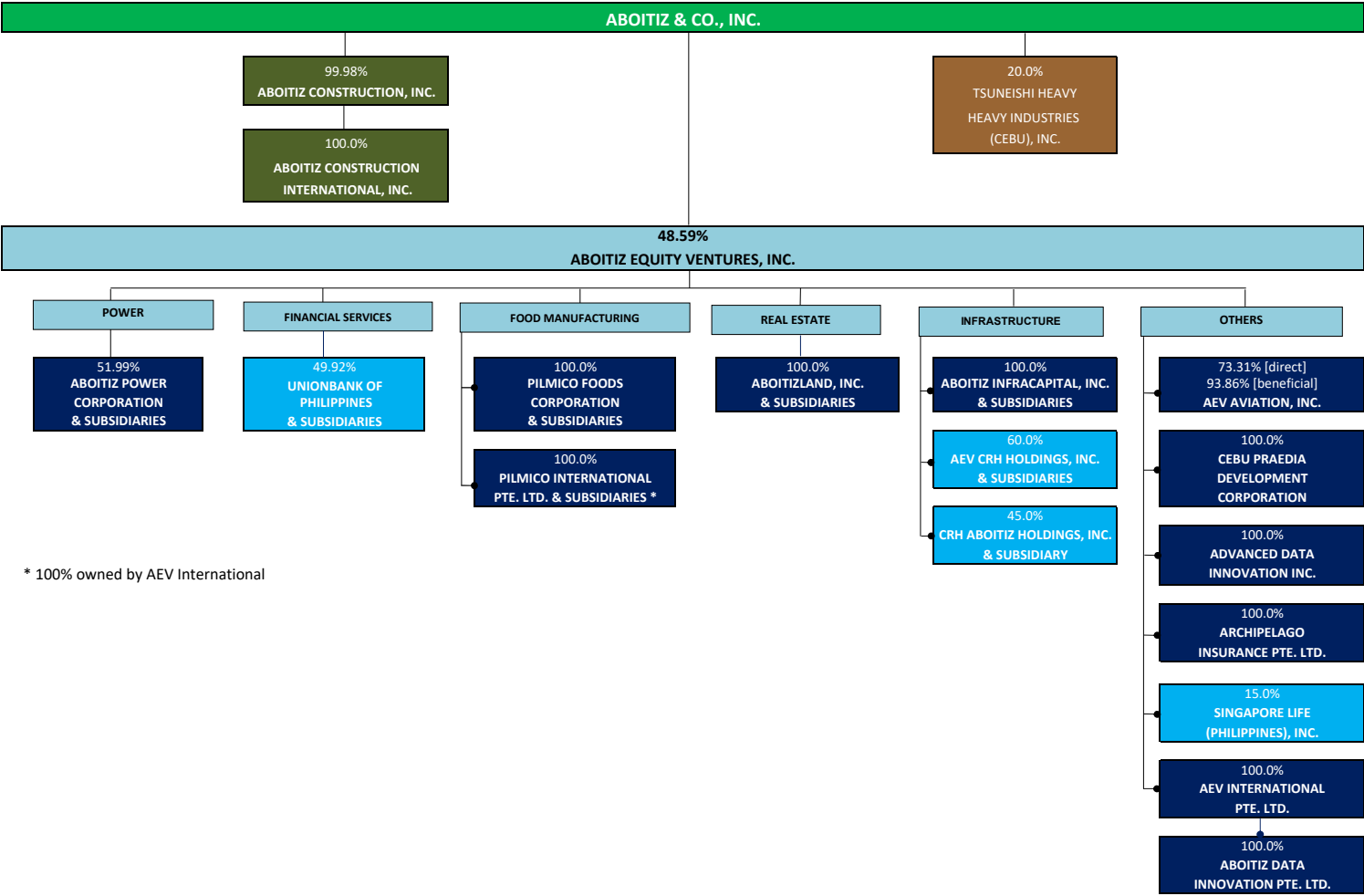
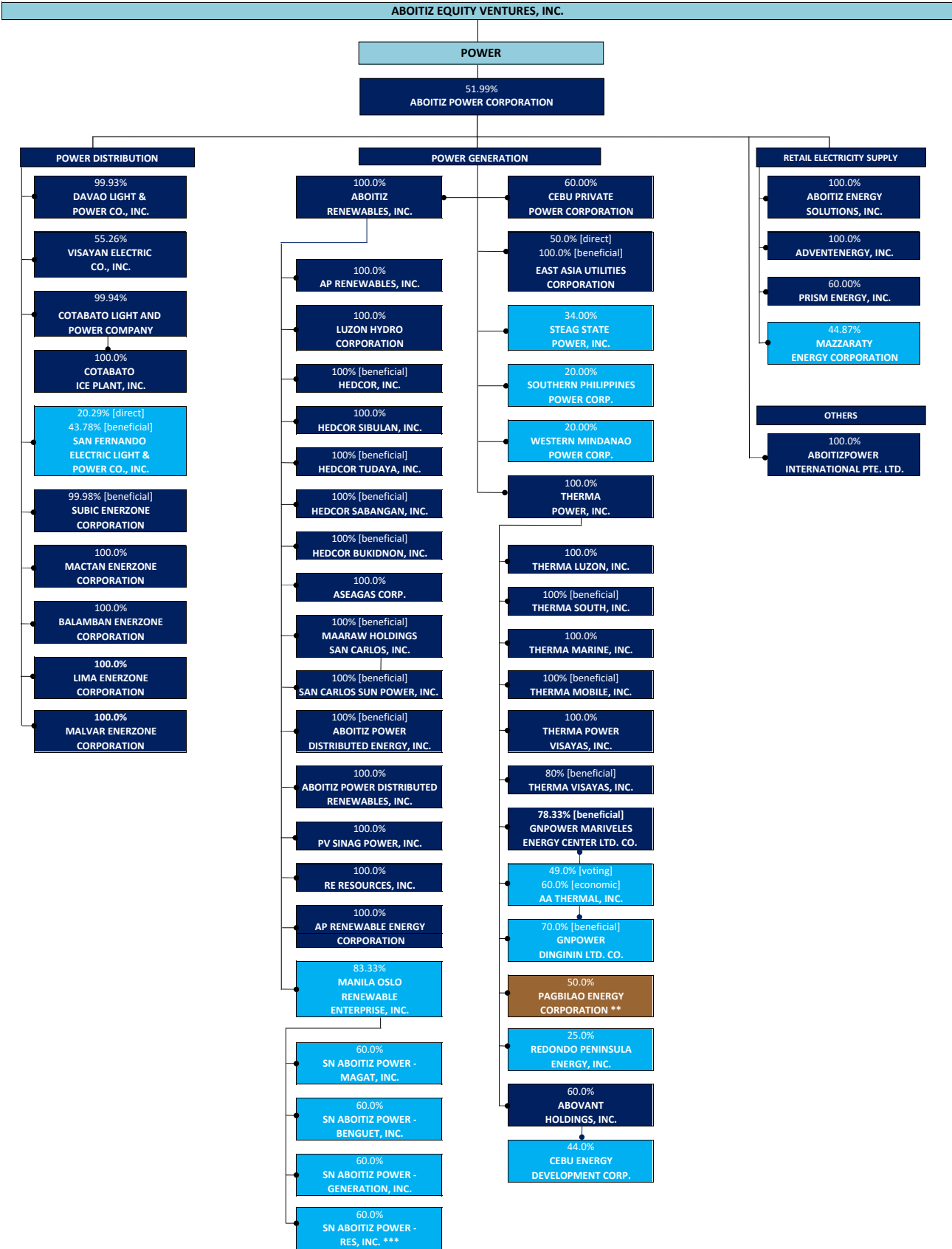


- Legend:
- Parent Company
  - Reporting Company
  - Co-Subsidiary
  - Subsidiary
  - Associate or Joint Venture
  - Other Related Parties



ABOITIZ EQUITY VENTURES, INC. - POWER  
CONGLOMERATE MAPPING  
As of December 31, 2022

Legend:  
Reporting Company  
Subsidiary  
Associate or Joint Venture  
Other Related Parties



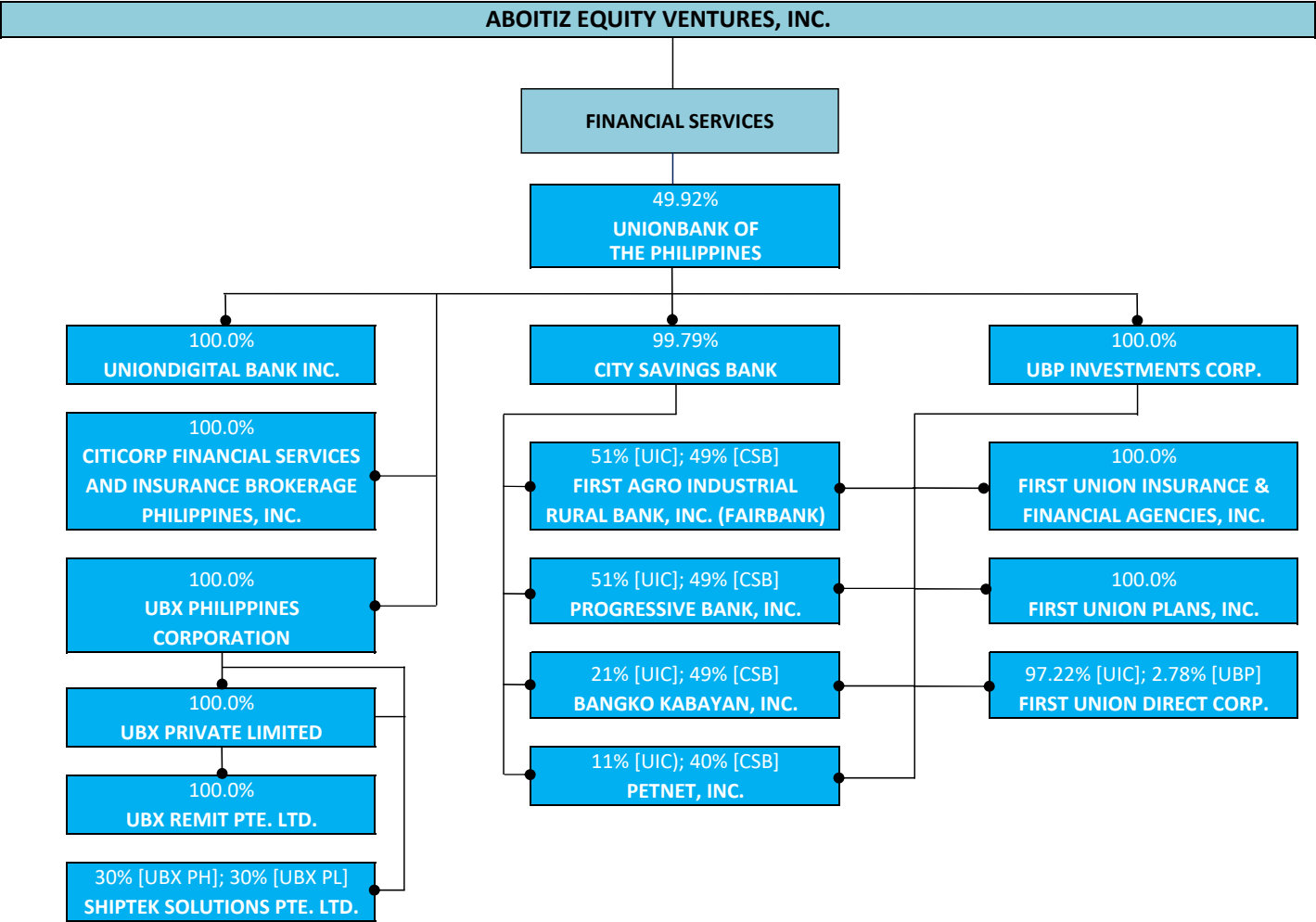
\*\* Joint Operations  
\*\*\* Engages in retail electricity supply business

ABOITIZ EQUITY VENTURES, INC. - FINANCIAL SERVICES  
CONGLOMERATE MAPPING

As of December 31, 2022

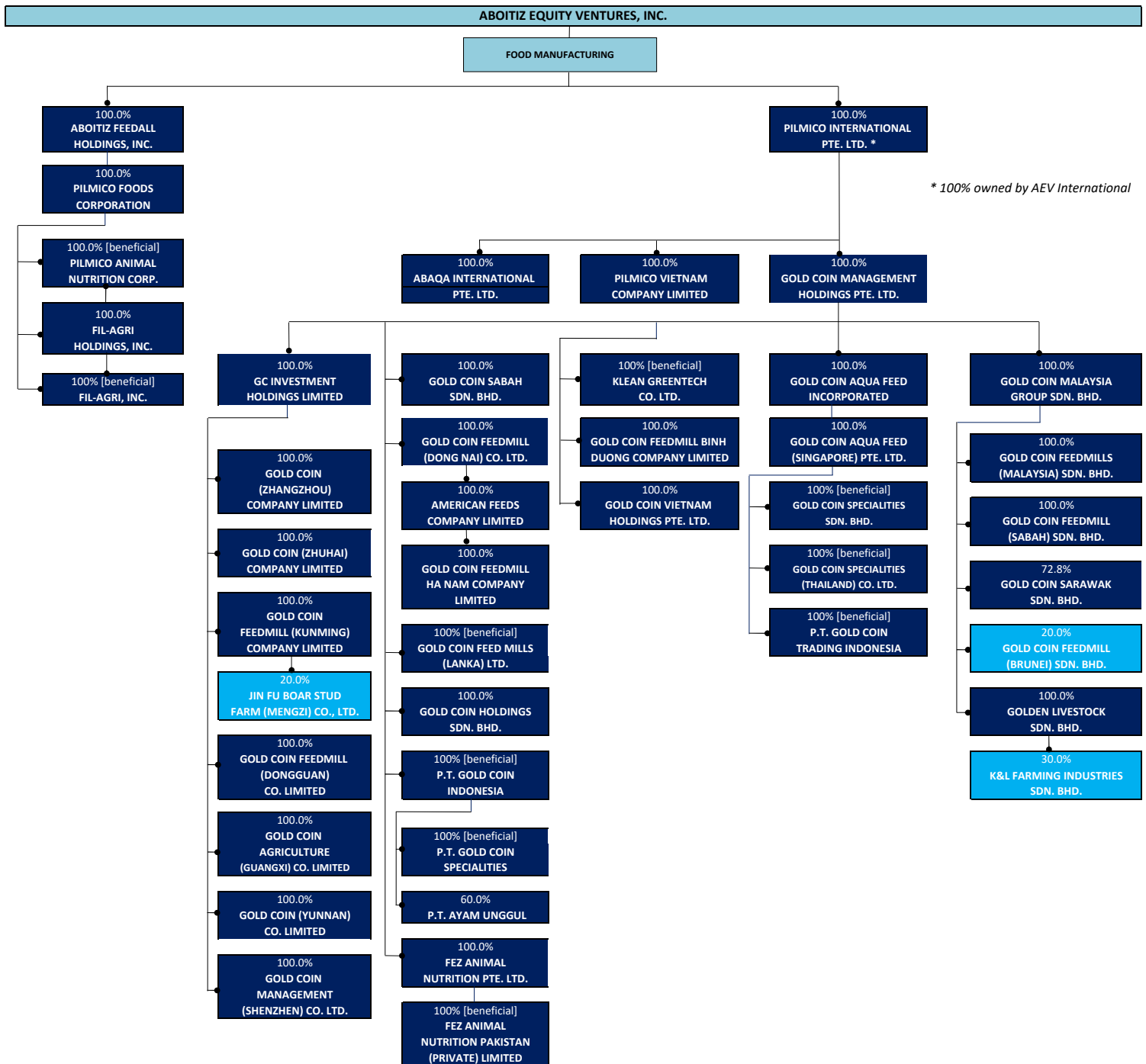
Legend:

- Reporting Company
- Subsidiary
- Associate or Joint Venture



**As of December 31, 2022**

Reporting Company  
 Subsidiary  
 Associate or Joint Venture



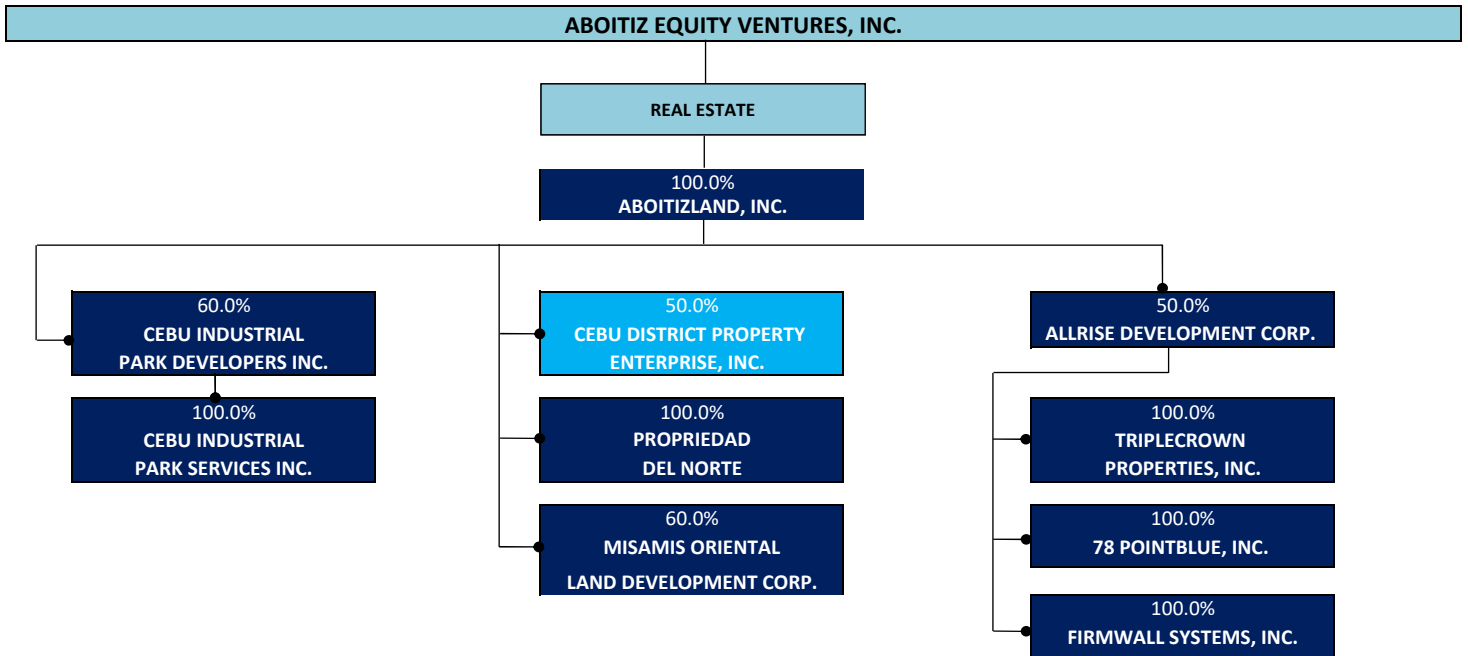
# ABOITIZ EQUITY VENTURES, INC. - REAL ESTATE

## CONGLOMERATE MAPPING

As of December 31, 2022

### Legend:

- Reporting Company
- Subsidiary
- Associate or Joint Venture



ABOITIZ EQUITY VENTURES, INC. - INFRASTRUCTURE  
CONGLOMERATE MAPPING  
As of December 31, 2022

Legend:

- Reporting Company
- Subsidiary
- Associate or Joint Venture

